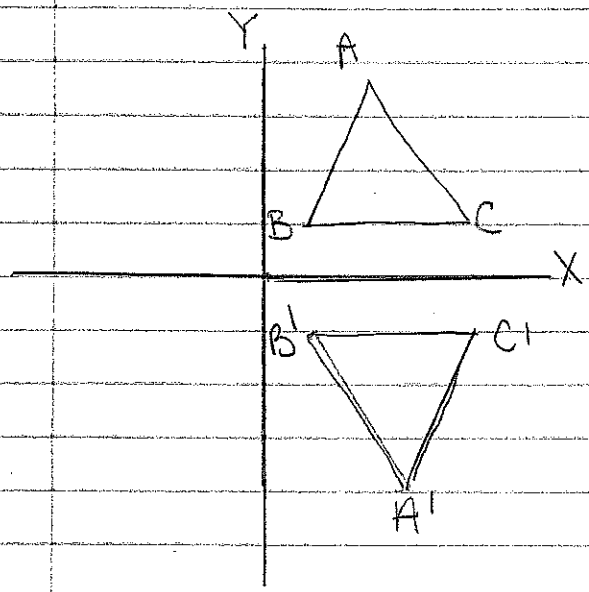


Reflections

reflections
→ flip

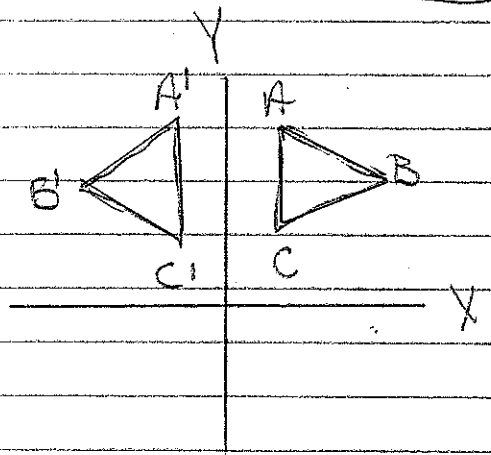
- mirror
- same distance from line of reflection



over the x-axis

(y → changes
x → stays the same)

over the y-axis



(y → stays the same
x → changes)

$A (-3, 5) \Rightarrow A' (3, 5)$ y-axis

$M (3, 3) \Rightarrow M' (3, -3)$ x-axis